



## **Jelgava Secondary Music School**

### **COMPETITION REGULATIONS**

Jelgava Secondary Music School in cooperation with the Latvian Piano Teachers' Association on March 17, 2023. organizes the 5<sup>th</sup> International Competition for Young Pianists "Music Rainbow".

### **Aims of the Competition**

- to develop classical music traditions in Jelgava and Latvia;
- to enrich and deepen the knowledge-base of the young pianists on the piano repertoire by European Union composers;
- to facilitate the development of artistic and virtuosic skills of piano performance students;
- to encourage piano performance teachers to discover new repertoire of high artistic value;
- to improve the prestige of professional education piano performance students and teachers within contemporary music education system.

### **Time, Venue, Participants**

The Competition will take place at the Concert Hall of Jelgava Secondary Music School, Lapskalna Street 2, Jelgava, LV-3001

The competitors are divided into three groups:

Group A	(age 7 - 9 years)	March 17, 2023
Group B	(age 10 -12 years)	March 17, 2023
Group C	(age 13 -15 years)	March 17, 2023

The competitors must be of indicated age on March 17, 2023.

Applications must be submitted electronically until 17.02.2023 to e-mail address: [silvija.audre@inbox.lv](mailto:silvija.audre@inbox.lv)

Application example is attached to this document.

If you have any questions, please call Silvija Audre – tel.00 371 26148977

Accommodation for competitors can upon request be booked by the Organizers (according to the data in the submitted Application Form).

Travel, food and accommodation expenses must be covered by competitors or their music education institutions.

Participation fee is EUR 30.

Participation fee must be transferred to the following account, indicating the participant that the payment is made for; participation fee may also be paid upon arrival to the competition venue.

**Bank Details**

Jelgavas Mūzikas vidusskola

Reg.no. 90000073499

Legal address: Lapskalna Street 2, Jelgava, LV-3007, tel.: 00 37163022173

www.jelgavasmuzskola.lv

**Account:**

Competition *Mūzikas varavīksne*

State treasury TREL22

Account LV51TREL2220522005000

Budget code: 21499

**Evaluation**

The Competition Jury is approved by the Board Director of the Latvian Piano Teachers' Association.

The performances of competitors are evaluated in each separate group through a grading scale of marks from 1 to 25. Jury members cannot evaluate their own students. The decision of the Jury is final and beyond appeal.

**Prizes**

The winners of the Competition receive diplomas, recognition certificates and prizes.

**Programme****Group A**

1. A compulsory piece by a composer from the 2023 EU Presiding Country (Sweden).
2. One or more pieces by Vienna classical composer.
3. One or more pieces by a composer from participant's home country.

The total duration of programme must be from 7 to 10 minutes.

**Group B**

1. A compulsory piece by a composer from the 2023 EU Presiding Country (Sweden).
2. One or more pieces by Vienna classical composer.
3. One or more pieces by a composer from participant's home country.

The total duration of the programme must be from 10 to 13 minutes.

**Group C**

1. A compulsory piece by a composer from the 2023 EU Presiding Country (Sweden).
2. One or more pieces by Vienna classical composer.
3. One or more pieces by a composer from participant's home country.

The total duration of the programme must be from 13 to 15 minutes.

Programmes must include one virtuosic piece.

The programme indicated in the application is not subject to change.

**ATTACHED –Application form example and scores of compulsory pieces**

**Jelgava Secondary Music School**

**APPLICATION FORM**

No.	Music education institution, country	Name, surname, date of birth	Class, group	Teacher's name, surname	Programme	Total duration

The following must be attached to the application:

- Copy of birth certificate or passport;
- Printed copy of document proving participation fee transfer;
- Photo 6×9 in JPG format;
- Applicant's creative CV.

Director:

/signature/

Head of *Piano Performance* Education Programme

/signature/

A grupa

WILHELM STENHAMMER-TRE SMA KLAVERSTYCKEN

II.

Allegro.

mf cresc. sfz

cresc. sfz

p f p

p f a tempo cresc. sfz dim.

p espr. cresc. sfz dim. cresc.



B grupa

4.

WILHELM PETERSON-BERGER

10

## Folkhumor.

Vivace. ♩ = 160.

*senza Rea*

*Rea \**

*Rea \**

*Rea \**

*Rea \**

*Rea \**

*1.*

*p*

*2.*

*leggero scherzando*

*p*

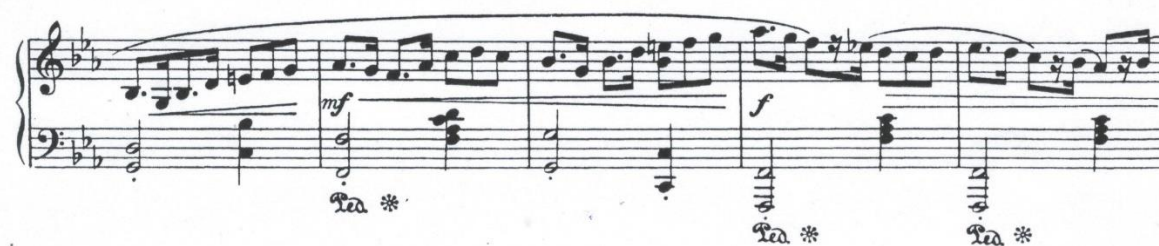
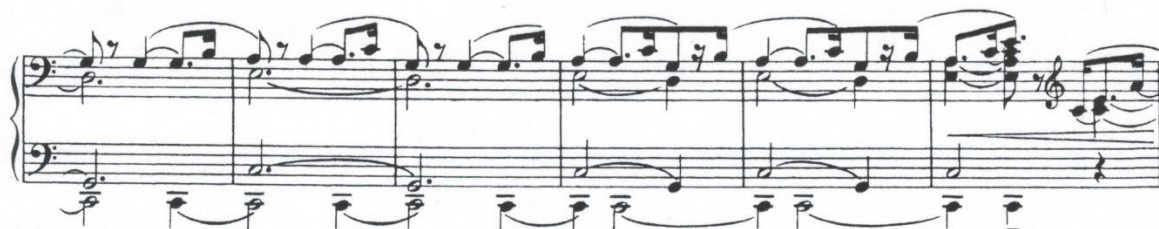
*Rea \**

*Rea \**

*simile*

*mf*

This page of musical notation consists of six systems of staves, each with a treble and bass clef. The notation includes various musical symbols such as notes, rests, and dynamic markings. The dynamics are marked as *f*, *mf*, *mp*, and *p*. Performance instructions include *senza Ped.*, *Ped.*, *con Ped.*, and *simile*. The notation is written in a key signature of two flats (B-flat and E-flat) and a time signature of 4/4. The first system includes a *f* dynamic and a *senza Ped.* instruction. The second system includes a *mf* dynamic. The third system includes a *mp* dynamic and a *simile* instruction. The fourth system includes a *p* dynamic and a *con Ped.* instruction. The fifth system includes a *p* dynamic. The sixth system includes a *p* dynamic and a *con Ped.* instruction. The notation is written in a key signature of two flats (B-flat and E-flat) and a time signature of 4/4.



C grupa

Malar - legender  
I

Ture Rangström

Lento improvisato, quasi Notturmo

Measures 1-4 of the piece. The music is in 6/4 time with a key signature of two sharps (F# and C#). The tempo/mood is 'Lento improvisato, quasi Notturmo'. The dynamics are marked *pp* (pianissimo) and *poco rit.* (a little slower).

Measures 5-8. The music continues with a *pp* dynamic.

Measures 9-12. The tempo changes to 'a tempo' and 'm. s.' (moderato). The dynamic is marked *p* (piano).

Measures 13-16. The tempo changes to 'Tempo più mosso' (faster). The dynamics are marked *pp* and *rit.* (ritardando). A first ending bracket labeled '8va' spans measures 15 and 16.

Measures 17-19. The tempo is 'molto lento espressivo' (very slow, expressive). The dynamics are marked *pp*.

Measures 20-23. The tempo is 'con moto, ma tranquillo' (with motion, but tranquil). The dynamics are marked *rit.* (ritardando), *pp*, and *p cresc.* (piano, crescendo).

23

27

30

32

*rit.* *con moto appassionato, sempre rubato*

35

38

System 38: Treble and bass staves. Treble staff contains chords and eighth notes. Bass staff contains eighth notes with a '4' marking above a group of four notes.

41

System 41: Treble and bass staves. Treble staff contains chords. Bass staff contains eighth notes with an '8' marking above a group of eight notes.

43

System 43: Treble and bass staves. Treble staff contains chords. Bass staff contains eighth notes with an '8' marking above a group of eight notes.

45

System 45: Treble and bass staves. Treble staff contains chords. Bass staff contains eighth notes.

47

System 47: Treble and bass staves. Treble staff contains chords. Bass staff contains eighth notes.

49 *ff* *allarg.*

52 *a tempo*

54 *poco rall.*

56 *dim.* *p* *p* 3 3 3 3

58 3 3 3 3 3 3 3 3

*più string. cresc.*

60

62

*f*

*allarg.*

65

*8va*

*largamente*

67

*tr*

68

*tr*

69

*p* *p* *pp*

*8va*

72

*rit. dim. molto*

*pp* *molto lento*

75

*rit.*

*rit.*

78

*pp* *pp*

*8va* *arp. lento*

81

*pp* *lento rit.*

*tr*